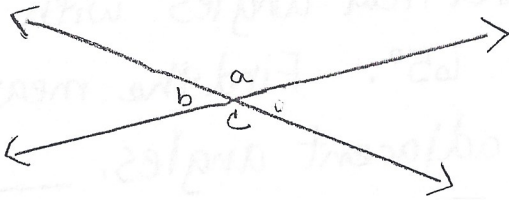


Name _____

1.)

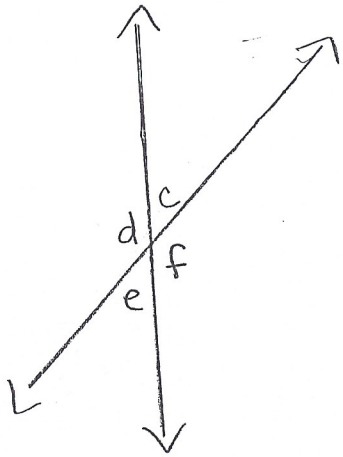


If $\angle a = 143^\circ$ then

$\angle b = \underline{\hspace{2cm}}$ $\angle c = \underline{\hspace{2cm}}$

$\angle d = \underline{\hspace{2cm}}$

2.)

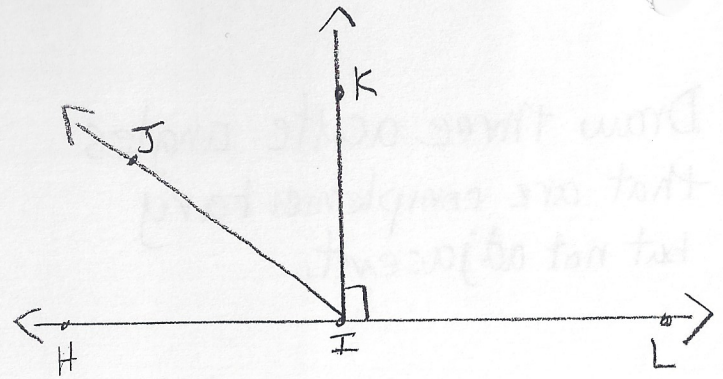


If $\angle e = 42^\circ$ then

$\angle f = \underline{\hspace{2cm}}$ $\angle c = \underline{\hspace{2cm}}$

$\angle d = \underline{\hspace{2cm}}$

3.)



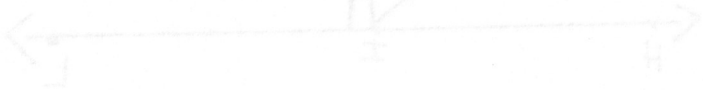
$\angle JIK = 58^\circ$ name its complement _____ and tell how many degrees it has.

Name a supplementary angle with $\angle JIK$. _____, What is its measure? _____

4.)

Draw a pair of adjacent, supplementary angles.

- 5) Draw three acute angles that are complementary but not adjacent.



- 6) Draw vertical angles with one pair 65° . Find the measure of the adjacent angles. _____



If $\angle z = 65^\circ$, then
 $\angle x = \angle z = 65^\circ$
 $\angle y = 180^\circ - 65^\circ = 115^\circ$

and tell how many angles
 $\angle JIK = 88^\circ$ name its complement

Name a supplementary angle with
 $\angle JIK$. What is

Draw a pair of adjacent
 supplement and angles.