

36) Tell the coordinates of each point. Then label the quadrants.

A:

B:

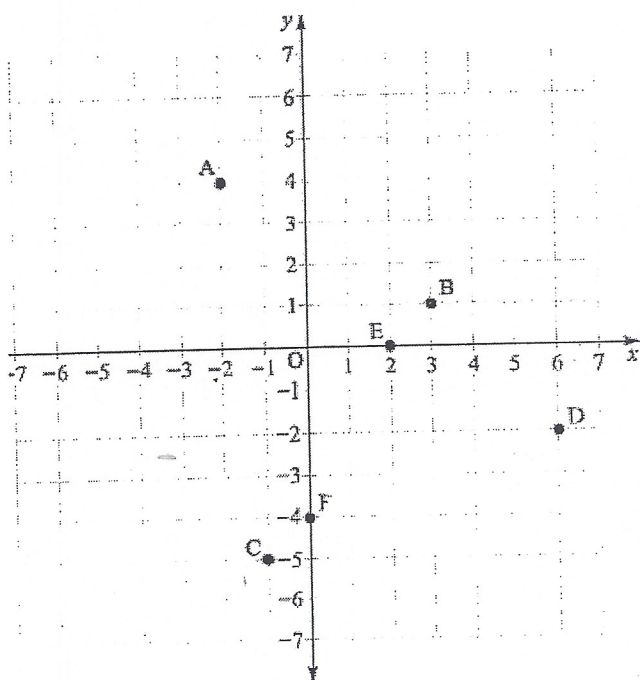
C:

D:

E:

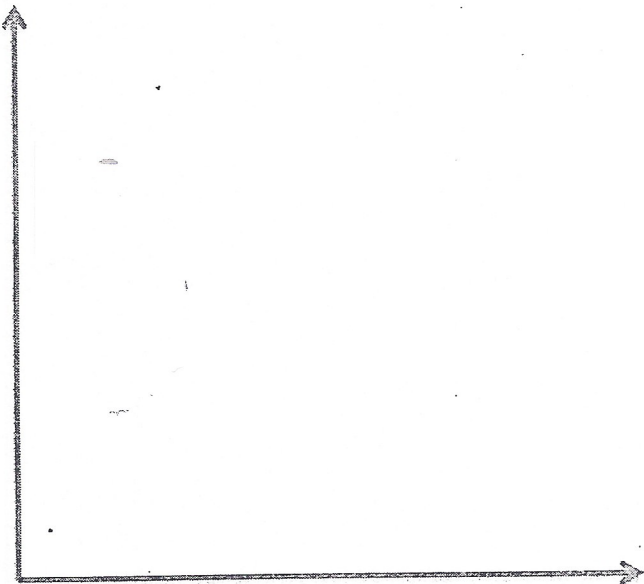
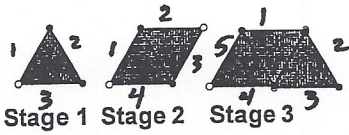
F:

36)

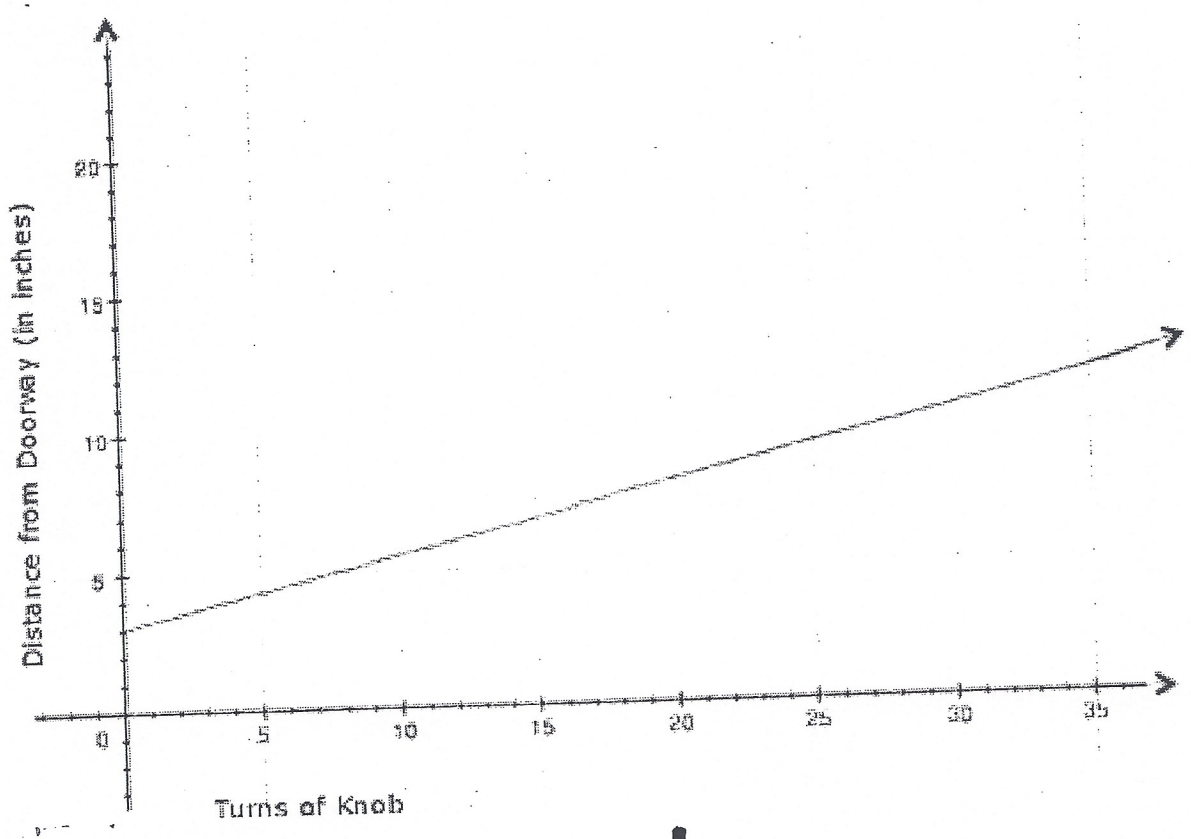


39)

39.) Build a polygon train with triangles. Keep track of the stage and the perimeter. Put your stage and perimeter in a table and then create a graph to show the growth. Mark and label the axes.

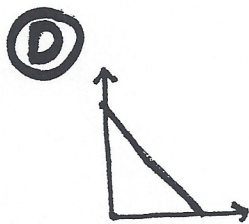
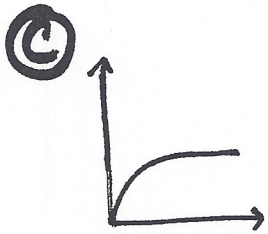
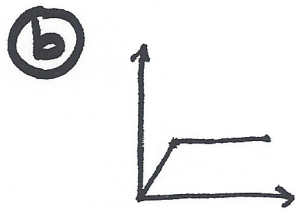
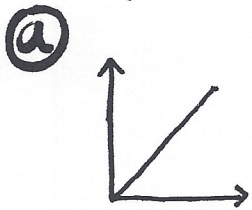


40) The graph below shows the distance that your wind-up car ^{traveled} from the doorway as a function of how many times its knob is turned:



40) How far from the doorway is the wind-up car once the knob has been turned 28 times?

42) Match the situation with the appropriate graph.



Situation 1: Your father is on a diet and he loses weight steadily for 2 months until he reaches his goal weight.

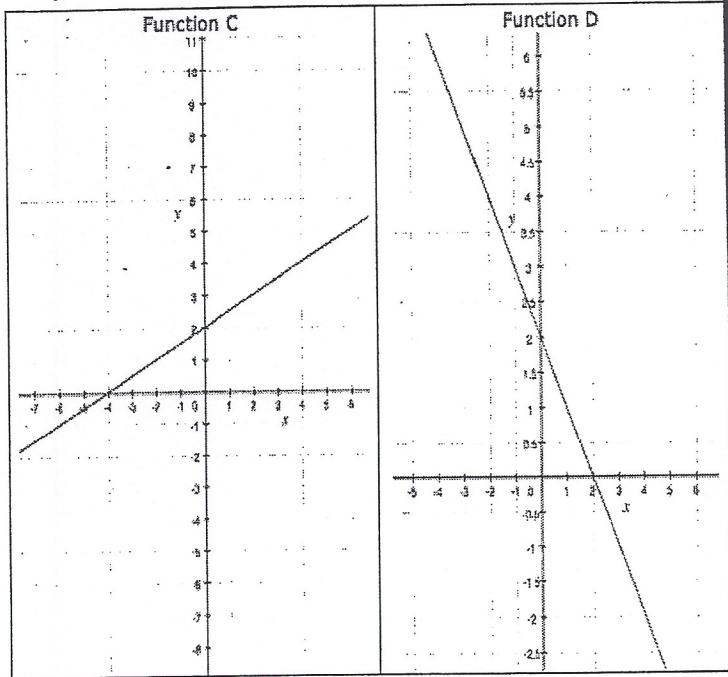
Situation 2: It has been sunny every day and the plant is growing nicely, but then you forget to water it and it does not grow at all for days.

Situation 3: It has been snowing 2 inches per hour for the past 12 hours!

Situation 4: Your grade in math is increasing steadily from the day you got your interim report but then you get busy with other things and your grade starts leveling off (not changing anymore).

42)

43)



43) What is the same about Function C and Function D?

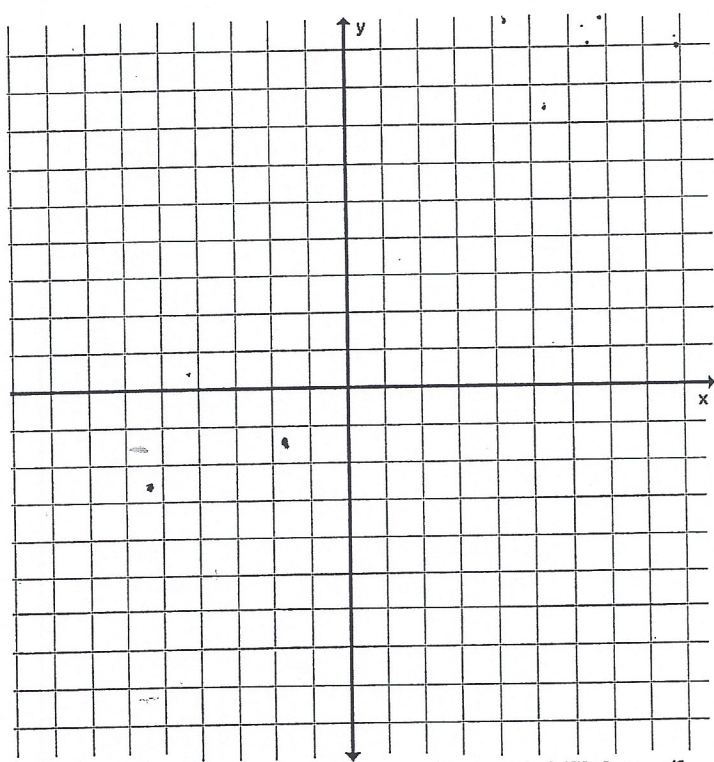
44) What is different about Function C and Function D?

43)

44)

37) Make a table of values and graph the results for the following equation. Then tell what type of slope the line has.

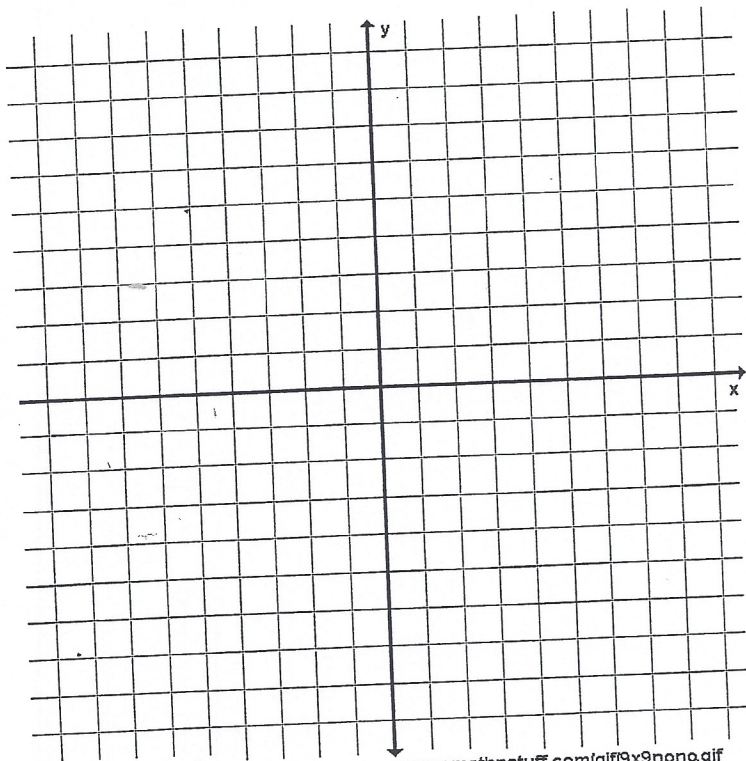
$$y = \frac{1}{3}x - 3$$



37)

38) Make a table of values and graph the results for the following equation. Then tell what type of slope the line has.

$$-2x + 4 = y$$





Each step in the pattern below is made up of small squares.

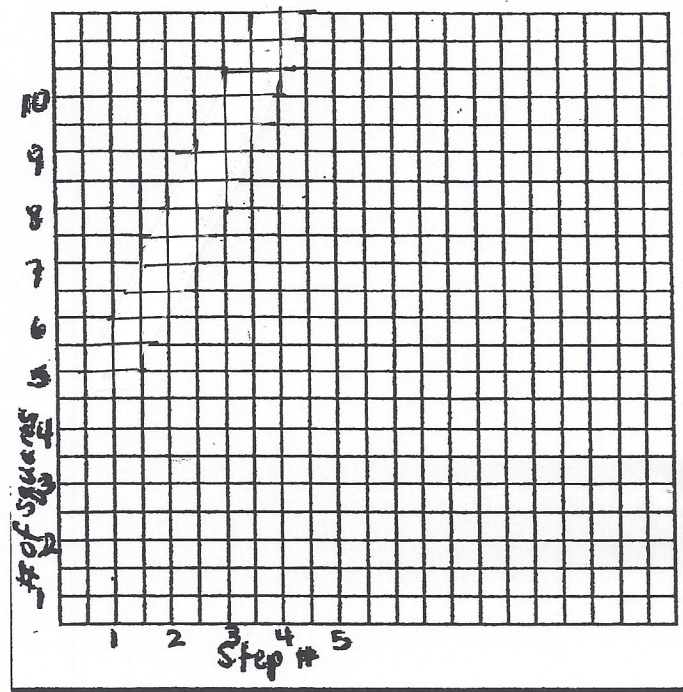


Use the information about the small squares to complete the following table.

Step #	Number of squares
1	4
2	9
3	16
4	
5	

Squares in a Pattern

Use a line graph. Make your own intervals.



Sketch Steps 4 and 5 below and describe the pattern:

