

Similar Figures

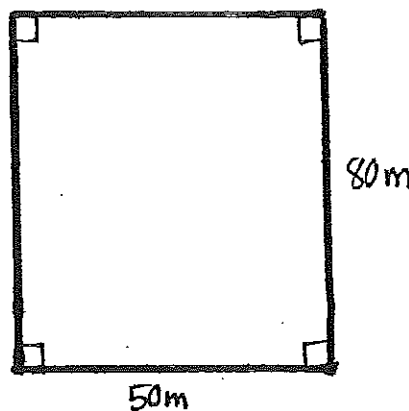
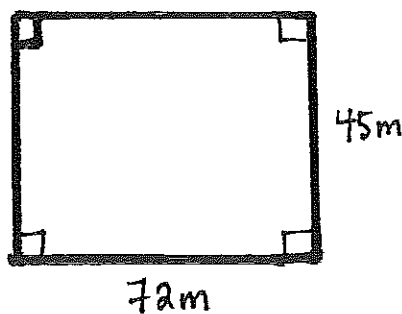
Name: _____

Date: _____

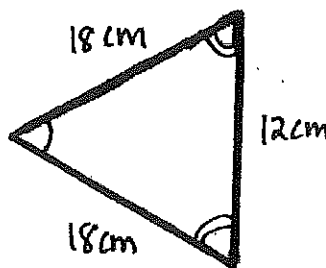
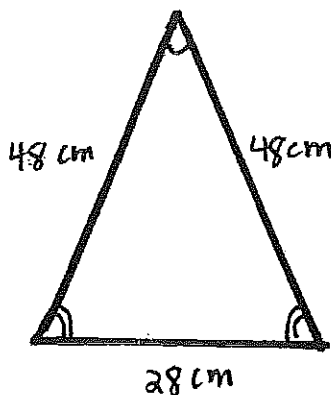
If two figures are similar, then the measures of the corresponding _____ are equal and the ratios of the lengths of the corresponding _____ are proportional.

① Are the two figures similar? Why or Why not?

a)



b)



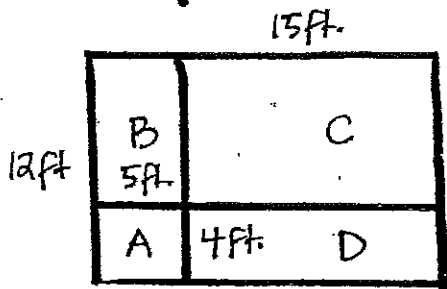
2) Answer the following questions and justify your answers

a) Are all squares similar?

b) Are all parallelograms similar?

c) Are all right triangles similar?

3) Use the figure to tell whether the rectangles in each pair are similar. (NOT drawn to scale)



a) Rectangle A and the original Rectangle

b) rectangle D and rectangle B

c) the original rectangle and rectangle C